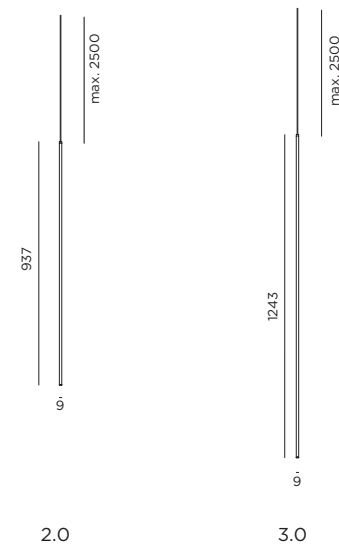


FLEXY FINLIN SUSPENDED

INSTALLATION INSTRUCTIONS | MARCH 2025

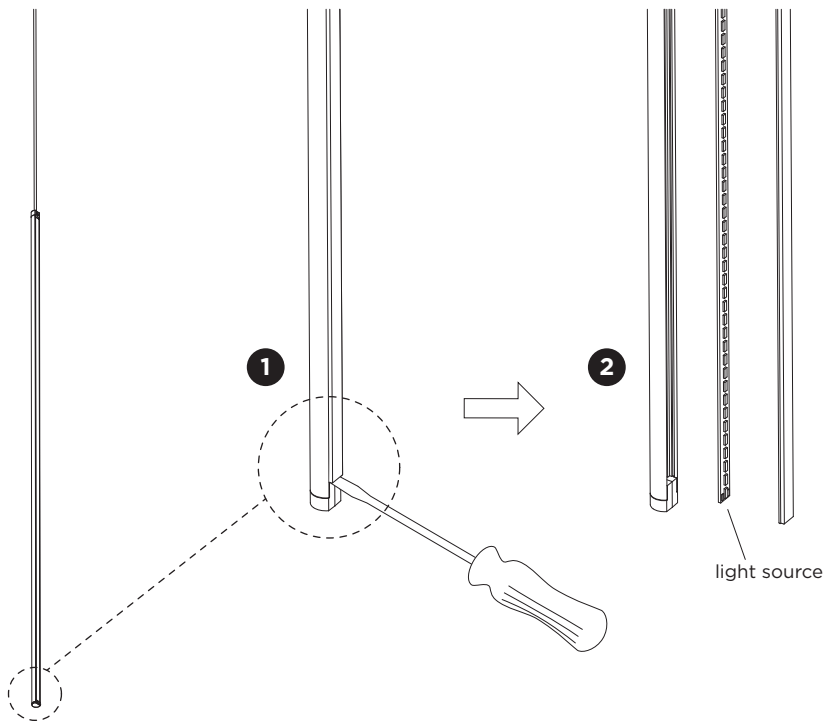


DIMENSIONS



FLEXFY FINLIN SUSPENDED

INSTALLATION INSTRUCTIONS | MARCH 2025



DISMOUNTING AND RECYCLING INSTRUCTIONS

Light source

- 1 Pull out the cover with a flat screw driver.
- 2 Disconnect the wires to remove the light source.



The light source is replaceable by Wever & Ducré or by a professional with explicit authorisation. For more information please contact your local Wever & Ducré customer service point.



This luminaire contains a light source with the energy class F.