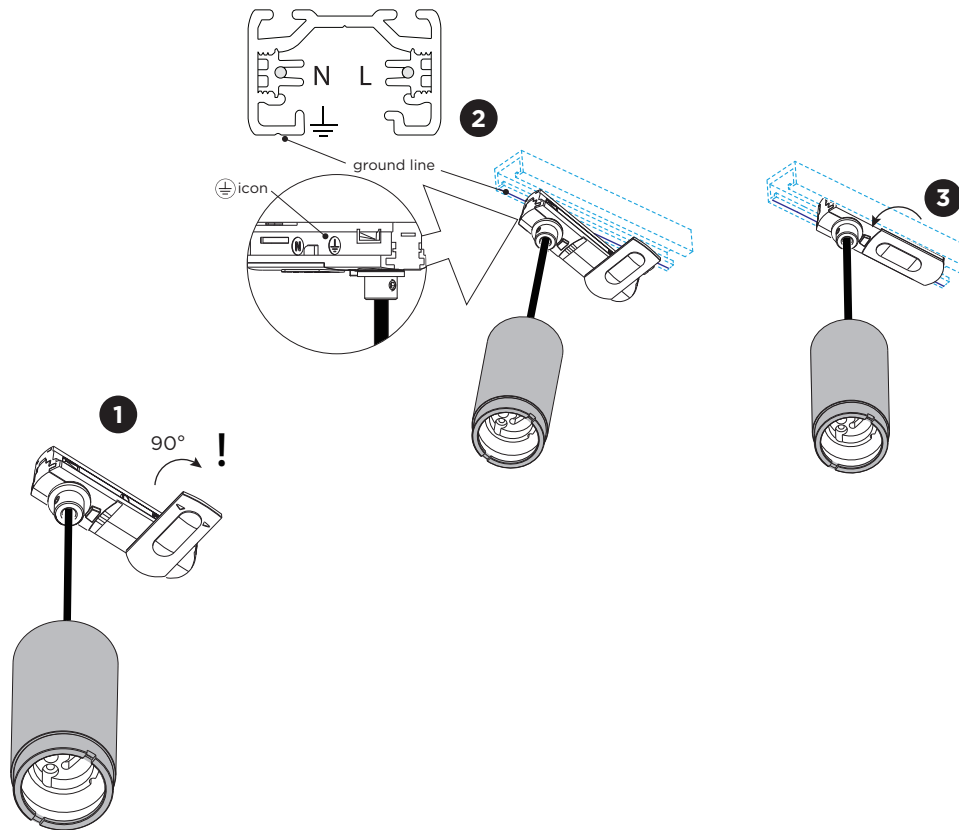


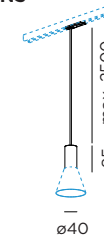
ODREY on track (1-phase)

INSTALLATION INSTRUCTIONS | FEBRUARY 2021

install the adapter into track



DIMENSIONS



ODREY SUSPENDED 1.0

MOUNTING INSTRUCTION

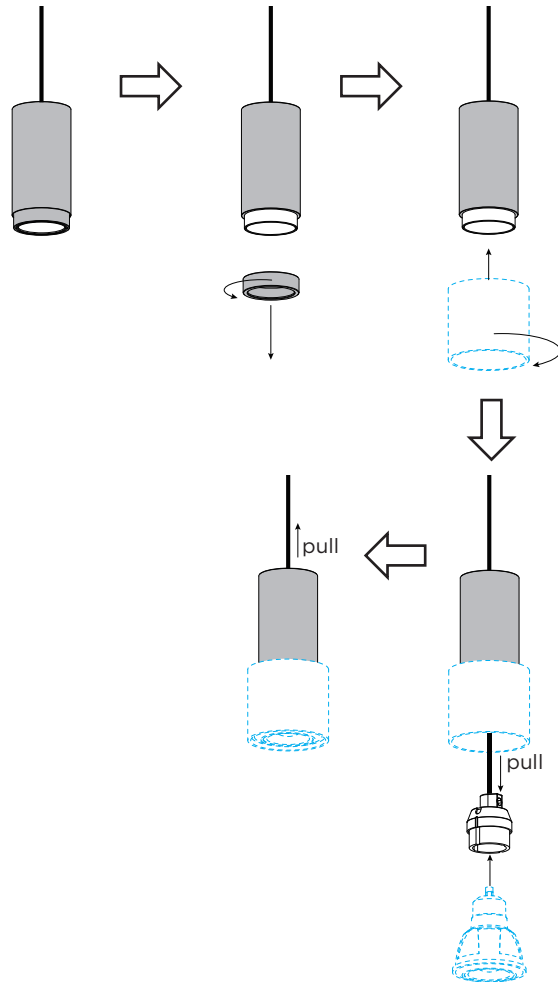
- 1** Turn the adapter's handle 90° as illustrated.
- 2** Push the fixture into the track. Make sure the icon on the inside of the adapter is faced towards the track side with the **ground line** carved in it.
- 3** Turn the handle back into the original position.

for installation with shade 1.0, please find the details on page 2

ODREY on track (1-phase)

INSTALLATION INSTRUCTIONS | FEBRUARY 2021

installation with shade 1.0

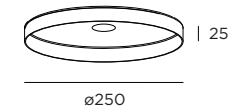


SHADES

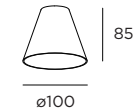
shade 1.0



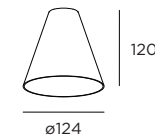
shade 2.0



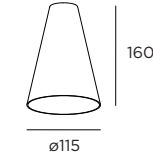
shade 3.0



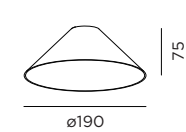
shade 4.0



shade 5.0



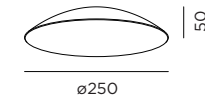
shade 6.0



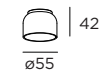
shade 7.0



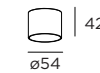
shade 8.0



inner cover 1.0



inner cover 2.0

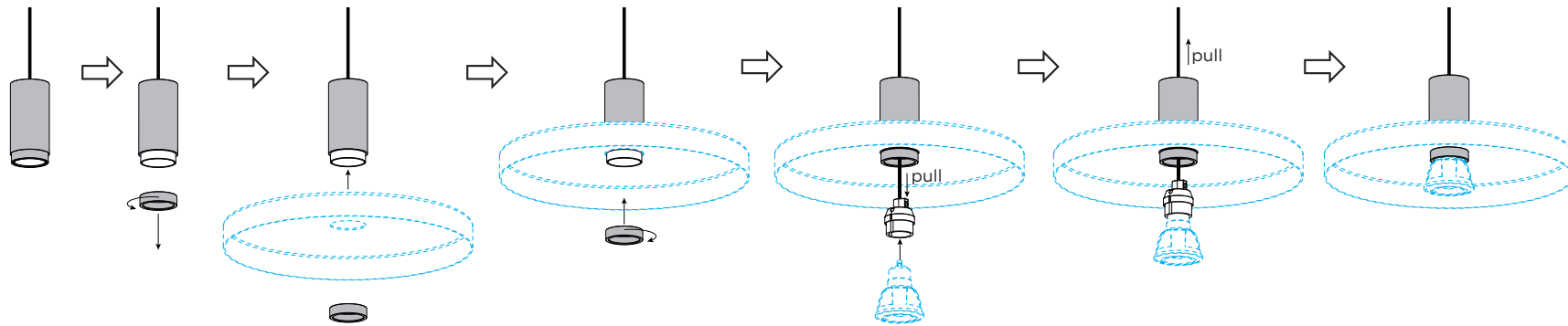


for installation with Shade 2.0 & 3.0-8.0, please find the details on page 3

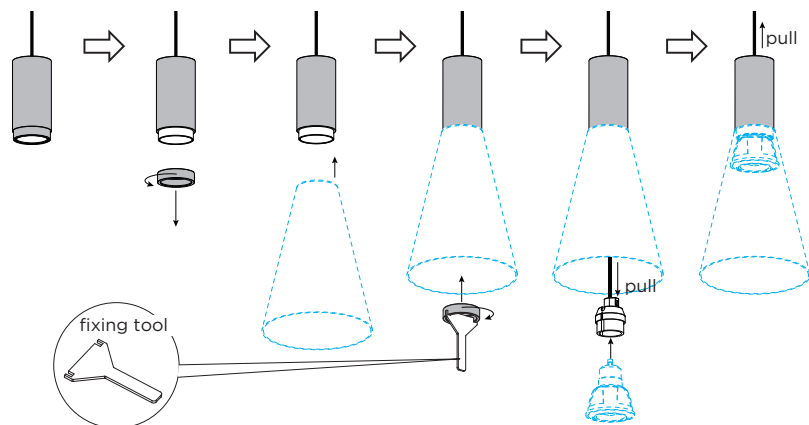
ODREY on track (1-phase)

INSTALLATION INSTRUCTIONS | FEBRUARY 2021

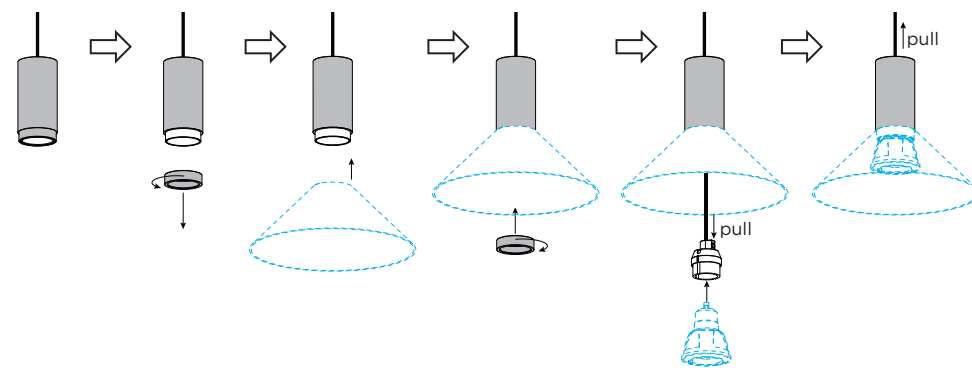
installation with shade 2.0



installation with shade 3.0 / 4.0 / 5.0 (always using the fixing tool)



installation with shade 6.0 / 7.0 / 8.0

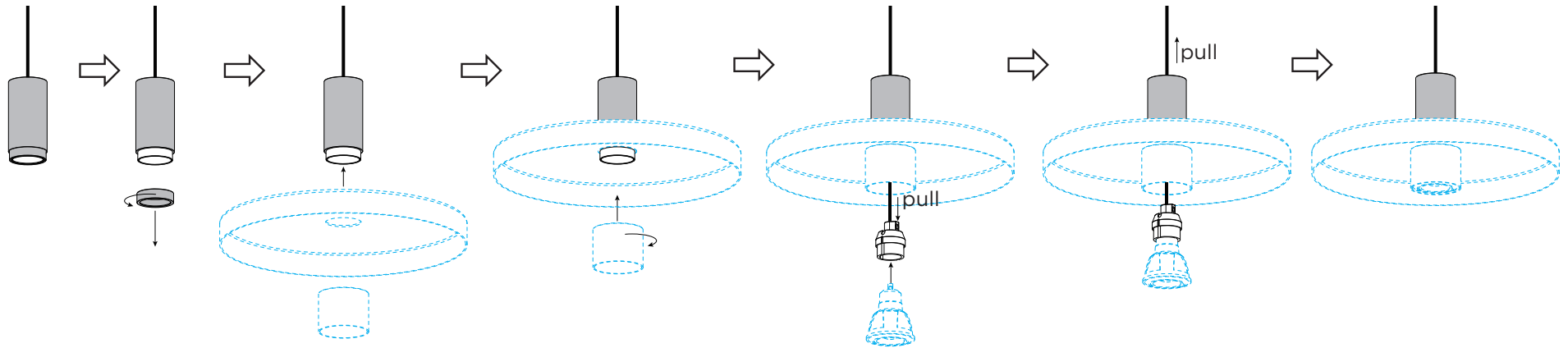


for installation with shade + inner cover, please find the details on page 4

ODREY on track (1-phase)

INSTALLATION INSTRUCTIONS | JUNE 2020

installation with shade + inner cover



For how to shorten the cable length to the required length, please see the page 5.

ODREY on track (1-phase)

INSTALLATION INSTRUCTIONS | FEBRUARY 2021

Shorten the cable length to the required length.

