

# Lampholders for General-service Incandescent

## Caps

Material: PA GF

Moulded thread: M10x1

Rotation stop: external

With locking screw

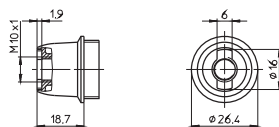
Height: 18.7 mm

Weight: 3.9/4.3 g, unit: 1000 pcs.

Type: 81132

**Ref. No.: 109152** white

**Ref. No.: 109153** black



1

2

## Caps

Material: PA GF

Round hole: Ø 10.5 mm

Rotation stop: internal

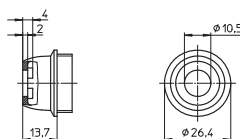
Height: 13.7 mm

Weight: 3.3 g, unit: 1000 pcs.

Type: 96004

**Ref. No.: 508352** white

**Ref. No.: 508353** black



3

4

## E14 Metal Lampholders, Three-piece

For incandescent lamps with base E14

Nominal rating: 2/250

Temperature marking: T190/T240

Type: 513 plain casing

Type: 514 threaded casing 28x2

## Insert

Material: porcelain, white

Casing lock

Screw terminals: 0.5–2.5 mm<sup>2</sup>

Weight: 10.3 g, unit: 500 pcs.

Type: 83142

**Ref. No.: 550375**



5

6

## Plain casings

Material: zinc-coated polished steel

Weight: 14.3/14.2/18.3/18.2 g

Unit: 500 pcs.

Type: 81019 insulating threaded ring: duroplastic, T190

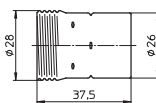
**Ref. No.: 103359** chrome-finish

**Ref. No.: 103360** brass-finish

Type: 81018 insulating threaded ring: steatite, T240

**Ref. No.: 507049** chrome-finish

**Ref. No.: 507050** brass-finish



7

8



9

10