

# Lampholders and Accessories for TC Lamps

Lamp support for TC-L lamps

Material: PC, crystal-clear, UV-stabilised

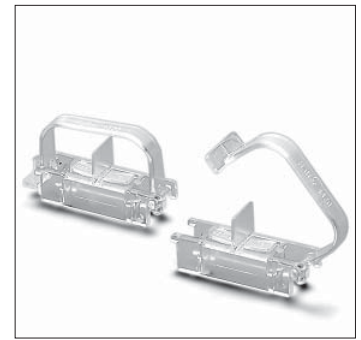
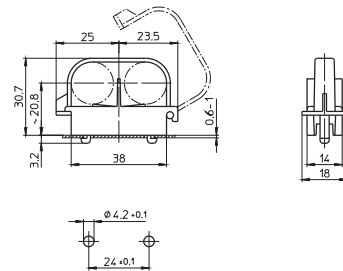
Lockable

Base split pins for wall thickness 0.6–1 mm

Weight: 4 g, unit: 500 pcs.

Type: 36061

**Ref. No.: 101497**



1

2

## GX53-1 Lampholders, Accessories

### For single-ended compact fluorescent lamps with integrated ballasts

GX53-1 lampholder

Casing: PC, white, T100, nominal rating: 2/250

Push-in terminals for through-wiring

for single-core leads: 0.5–1 mm<sup>2</sup>

for stranded leads:

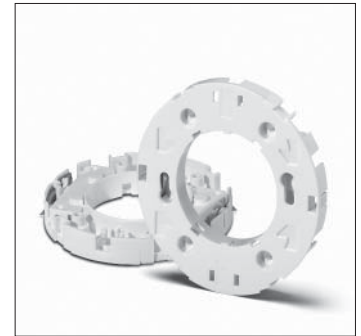
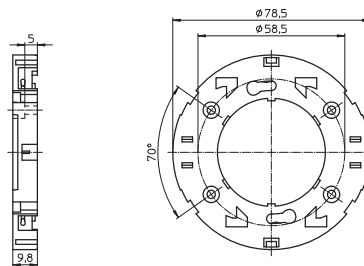
0.75 mm<sup>2</sup>, tinned lead ends

Fixing holes for screws M3

Weight: 12.8 g, unit: 200 pcs.

Type: 11000

**Ref. No.: 530878**



3

4

GX53-1 lampholder

Fixing springs for installation into furniture panels

Casing: PC, white, T100, nominal rating: 2/250

Push-in terminals for through-wiring

for single-core leads: 0.5–1 mm<sup>2</sup>

for stranded leads:

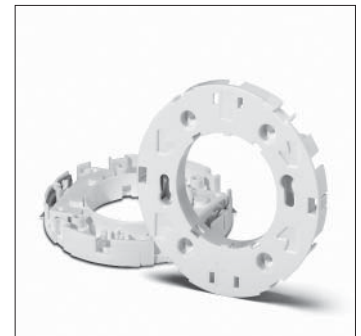
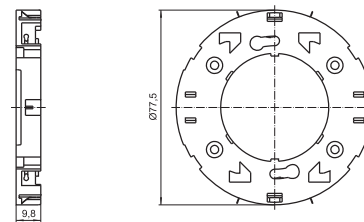
0.75 mm<sup>2</sup>, tinned lead ends

Cut-out:  $\varnothing 78^{+0.2}$  mm

Weight: 13.2 g, unit: 200 pcs.

Type: 11010

**Ref. No.: 530879**



5

6

Cord grip/cover plate for GX53-1 lampholders

For leads H03VVH2-F 2X0.75, tinned lead ends

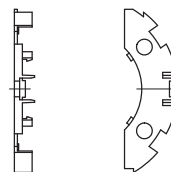
For luminaires of protection class II

Material: PC, white

Weight: 1.6 g, unit: 200 pcs.

Type: 97278

**Ref. No.: 504939**



7

8

Surface-mounted installation ring

For wood or furniture panels

Material: PC, white

Weight: 10.4 g, unit: 100 pcs.

Type: 97277

**Ref. No.: 504938**



9

10