

Electronic Superimposed Ignitors for Projection Lamps up to 1200 W

Standard version

For high-pressure discharge lamps

Phasing of the ignition voltage:

60–90 °el and 240–270 °el

Max. permitted casing temperature: 105 °C

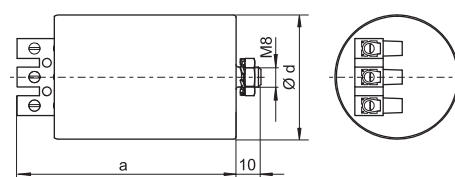
Screw terminals: 0.75–2.5 mm²

Fastening: male nipple with pre-assembled washer and nut

For luminaires of protection class I



Al casing



Type	Ref. No.	Voltage AC 50–60 Hz V	Max. lamp current A	Internal loss W	Inherent heating K	Ignition voltage kV	Load capacity pF	Switch-off time sec./Hz	Casing				Weight
									d (Ø) mm	a mm	b mm	c mm	g
Z 1200/2.5	140608*	220–240	15	< 7.5	< 40	2–2.5	20–200	—	50	80	—	—	330
Z 1200/9	140609**	220–240	15	< 10	< 40	7–8	20–50	—	50	135	—	—	650

* For lamps, e.g. HSR, MSR, SN

** For lamps, e.g. HMI, HTI, CDI, RSI, CSR