

Accessories

For single-ended compact fluorescent lamps

The luminaire manufacturer is responsible for the right choice of accessories.

Cover caps for G24/GX24 lampholders (see p. 290–293)

Lamp support for TC-D, TC-DEL lamps

Material: PC, white, UV-stabilised

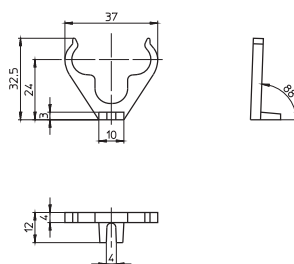
Lamp position: 45°

Fixing foot with slot for screw M3.5

Weight: 1.5 g, unit: 500 pcs.

Type: 97031

Ref. No.: 105448



Lamp supports for TC-S, TC-SEL lamps

Height adjustable H: 17.5/20.5/23.5 mm

Push-fit foot for cut-out Ø 5.5 mm

for wall thickness up to 1 mm

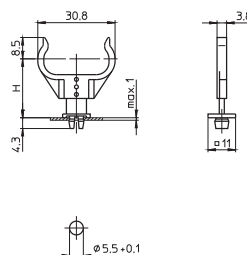
Weight: 0.4/0.8/0.8 g, unit: 500 pcs.

Type: 35060

Ref. No.: 105775 foot, PC, white

Ref. No.: 105776 bracket, PC, crystal-clear, UV-stabilised

Ref. No.: 106416 bracket, PC, white, UV-stabilised



Lamp supports for TC-S, TC-SEL lamps

Height adjustable H: 27.5/30.5/33.5 mm

Push-fit foot for cut-out Ø 5.5 mm

for wall thickness up to 1 mm

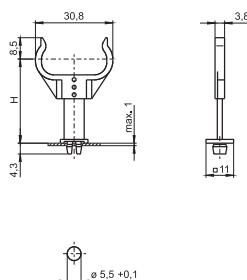
Weight: 0.7/0.8/0.8 g, unit: 500 pcs.

Type: 35061

Ref. No.: 105931 foot, PC, white

Ref. No.: 105776 bracket, PC, crystal-clear, UV-stabilised

Ref. No.: 106416 bracket, PC, white, UV-stabilised



Lamp supports for TC-L lamps

Height adjustable H: 21/24/27 mm

Push-fit foot for cut-out Ø 5.5 mm

for wall thickness up to 1 mm

Weight: 0.4/1.3/1.1 g, unit: 500 pcs.

Type: 35760

Ref. No.: 105775 foot, PC, white

Ref. No.: 105777 bracket, PC, crystal-clear, UV-stabilised

Ref. No.: 106417 bracket, PC, white, UV-stabilised

