

# Lampholders and Accessories for T Lamps

G13 Rotoclic built-in lampholders for lamps T8 and T12  
T140, nominal rating: 2/500

Base push-in terminals: 0.5–1 mm<sup>2</sup>

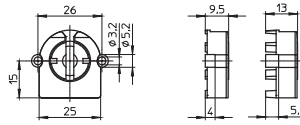
Fixing holes  $\varnothing$  3.2 mm

Weight: 5 g, unit: 1000 pcs.

Type: 49100/49500

**Ref. No.: 537165** lampholder thickness: 13 mm

**Ref. No.: 537173** lampholder thickness: 9.5 mm



G13 built-in lampholders with spring adjustment  
for lamps T8 and T12

T130, nominal rating: 2/500

Base push-in terminals: 0.5–1 mm<sup>2</sup>

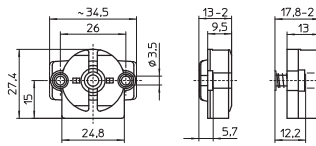
Fixing holes for screws M3

Weight: 6/5.5 g, unit: 1000 pcs.

Type: 47102/47502

**Ref. No.: 101681** lampholder thickness: 13 mm

**Ref. No.: 101740** lampholder thickness: 9.5 mm



G13 Rotoclic built-in lampholders for lamps T8 and T12  
T140, nominal rating: 2/500

Lateral push-in terminals: 0.5–1 mm<sup>2</sup>

Suitable for Top Test

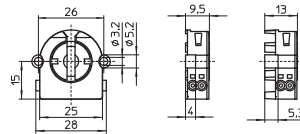
Fixing holes  $\varnothing$  3.2 mm

Weight: 5/4.7 g, unit: 1000 pcs.

Type: 59100/59500

**Ref. No.: 537181** lampholder thickness: 13 mm

**Ref. No.: 537205** lampholder thickness: 9.5 mm



G13 built-in lampholders with starter attachment  
for lamps T8 and T12

T130, nominal rating: 2/500

Base push-in terminals: 0.5–1 mm<sup>2</sup>

Fixing holes for screws M3

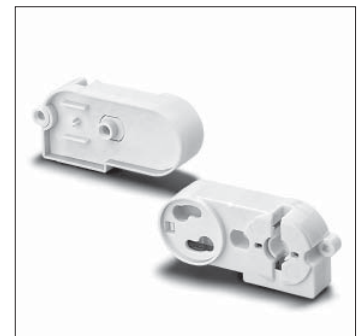
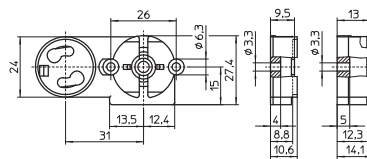
Weight: 8.7/8 g, unit: 1000 pcs.

Type: 47200 lampholder thickness: 13 mm

**Ref. No.: 101706**

Type: 47600 lampholder thickness: 9.5 mm

**Ref. No.: 101765**



G13 Rotoclic built-in lampholders for lamps T8 and T12  
T140, nominal rating: 2/500

Base push-in terminals: 0.5–1 mm<sup>2</sup>

Rear split pins for wall thickness up to 1.2 mm

Weight: 5.1/5.9/5/5.5 g, unit: 1000 pcs.

Type: 49105/49106 lampholder thickness: 13 mm

**Ref. No.: 537166**

**Ref. No.: 537167** with spring adjustment

Type: 49505/49506 lampholder thickness: 9.5 mm

**Ref. No.: 537174**

**Ref. No.: 537175** with spring adjustment

