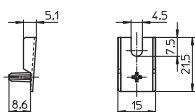


Lampholders for Halogen Incandescent Lamps

Protection cap for R7s lampholders
For push-fit onto lampholders type 323
Protection against electrical shock
on the rear side of the lampholder
Lampholder with assembled protection cap on request
Material: LCP, natural
Weight: 0.7 g, unit: 1000 pcs.
Type: 97528
Ref. No.: 507592



1

2

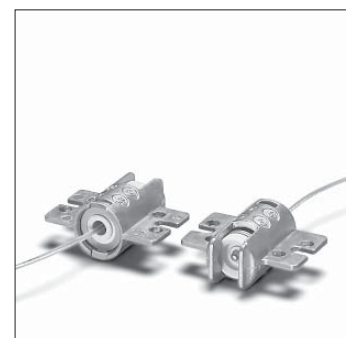
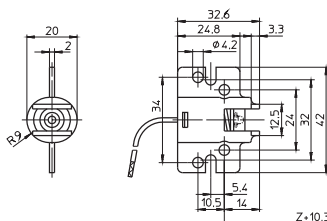
3

4

R7s Metal Lampholders

For mains voltage halogen incandescent lamps

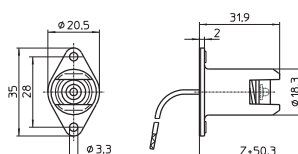
R7s lampholder
Casing: Al, T300, contact pin: Ni
Nominal rating: 10/250
Lead: Cu nickel-plated, stranded conductors
0.75 mm², PTFE-insulation, length: 300 mm
Fixing flange
Fixing holes for screws M4
Weight: 21 g, unit: 50 pcs.
Type: 30023
Ref. No.: 100616



5

6

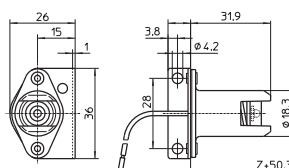
R7s lampholder
Casing: Al, T300, contact pin: Cu, silver bulb
Nominal rating: 10/250
Lead: Cu nickel-plated, stranded conductors
1 mm², PTFE-insulation, length: 300 mm
Fixing flange
Fixing holes for screws M3
Weight: 15.7 g, unit: 1000 pcs.
Type: 30523
Ref. No.: 100710



7

8

R7s lampholder
Casing: Al, T300, contact pin: Cu, silver bulb
Nominal rating: 10/250
Lead: Cu nickel-plated, stranded conductors
1 mm², PTFE-insulation, length: 350 mm
Fixing bracket
Fixing holes for screws M4
Weight: 24.8 g, unit: 500 pcs.
Type: 30550
Ref. No.: 100720



9

10