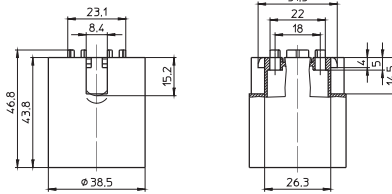


E27 Thermoplastic Lampholders, One-piece

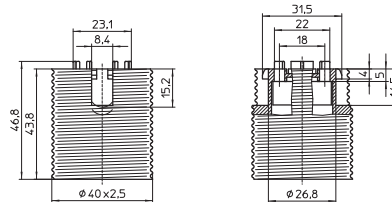
For incandescent lamps with base E27

E27 lampholders with temperature marking
T180 on request.
Brass-finished versions are available on request.

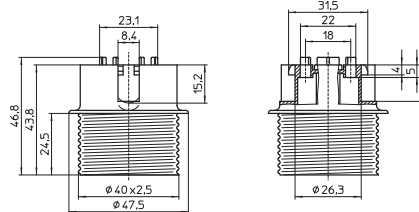
E27 lampholders, for cover caps
Plain casing
Casing: PET GF, T210
Nominal rating: 4/250
Push-in twin terminals: 0.5–2.5 mm²
Fixing holes for screws M4
Weight: 17.4 g, unit: 500 pcs.
Type: 64401
Ref. No.: 108936 white
Ref. No.: 500810 black



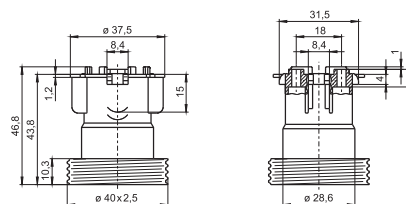
E27 lampholders, for cover caps
External thread 40x2.5 IEC 60399
Casing: PET GF, T210
Nominal rating: 4/250
Push-in twin terminals: 0.5–2.5 mm²
Fixing holes for screws M4
Weight: 19.1/18.8 g, unit: 500 pcs.
Type: 64501
Ref. No.: 108965 white
Ref. No.: 109429 black



E27 lampholders, for cover caps
External thread 40x2.5 IEC 60399, with flange
Casing: PET GF, T210
Nominal rating: 4/250
Push-in twin terminals: 0.5–2.5 mm²
Fixing holes for screws M4
Weight: 21.4 g, unit: 500 pcs.
Type: 64601
Ref. No.: 501358 white
Ref. No.: 501356 black



E27 lampholders, for cover caps
Profiled shape, external thread 40x2.5 IEC 60399
Casing: PET GF, T210, nominal rating: 4/250
Push-in twin terminals: 0.5–2.5 mm²
Fixing holes for screws M3
Rear fixing holes for self-tapping screws
acc. to ISO 1481/7049-ST3.9-C/F
Weight: 14.8/14.9 g, unit: 500 pcs.
Type: 64719
Ref. No.: 504303 white
Ref. No.: 504302 black



1

2

3

4

5

6

7

8

9

10