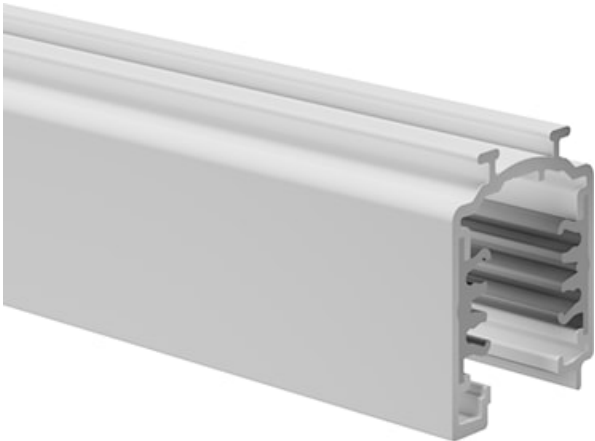


ONETRACK 2M WHITE 9000A-2/W-ST

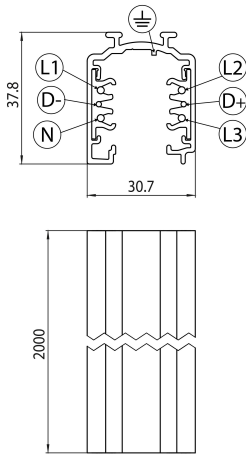
Artikelnummer 9200502



Onetrack - 3 circuit track + 2 circuit control L1/L2/L3/Neutral/ground 16A/440V + D+/D- 2x1A/50V FELV AC, DALI, DMX, 1-10V etc. compatible, circuits can be controlled individually, aluminum body, suitable for surface and suspended mounting, 2000 x 30.7 x 37.8 mm (L x W x H), white (RAL 9010).

Technische activa

Afmetingen (mm)



Fotometrie

ONETRACK 2M WHITE 9000A-2/W-ST

Artikelnummer 9200502



General data

| | |
|---------------------|-----------------------------------|
| Productnaam | ONETRACK 2M WHITE 9000A-2/W-ST |
| Technologie | Toebehoren |
| Type accessoire | Electrical |
| Type of accessory | Track |
| Behuizing | Aluminium |
| Montage | Pendel, Plafondopbouw, Wandopbouw |
| Algemene toepassing | Musea & Galeries, Kantoor |
| ETIM klasse | EC000101 |
| Garantie | 5 jaar |

Electrical data

| | |
|--------------------------------|----------|
| Primaire voedingsspanning min | 220 |
| Primaire voedingsspanning max | 240 |
| Elektrische beschermingsklasse | Klasse I |

Physical data

| | |
|-----------------|------|
| Kleur behuizing | Wit |
| Lengte (mm) | 2000 |
| Breedte (mm) | 30.7 |
| Hoogte (mm) | 37.8 |
| Gewicht (kg) | 1.68 |

Packaging

| | |
|--------------------------------|---------------|
| EAN code | 4012289005023 |
| Enkele lengte verpakking (cm) | 206.0 |
| Enkele breedte verpakking (cm) | 3.3 |
| Hoogte eenheidsverpakking (cm) | 3.5 |
| Eenheden per omdoos | 138 |
| Lengte omdoos (cm) | 210.0 |
| Breedte omdoos (cm) | 80.0 |
| Diepte omdoos (cm) | 50.0 |