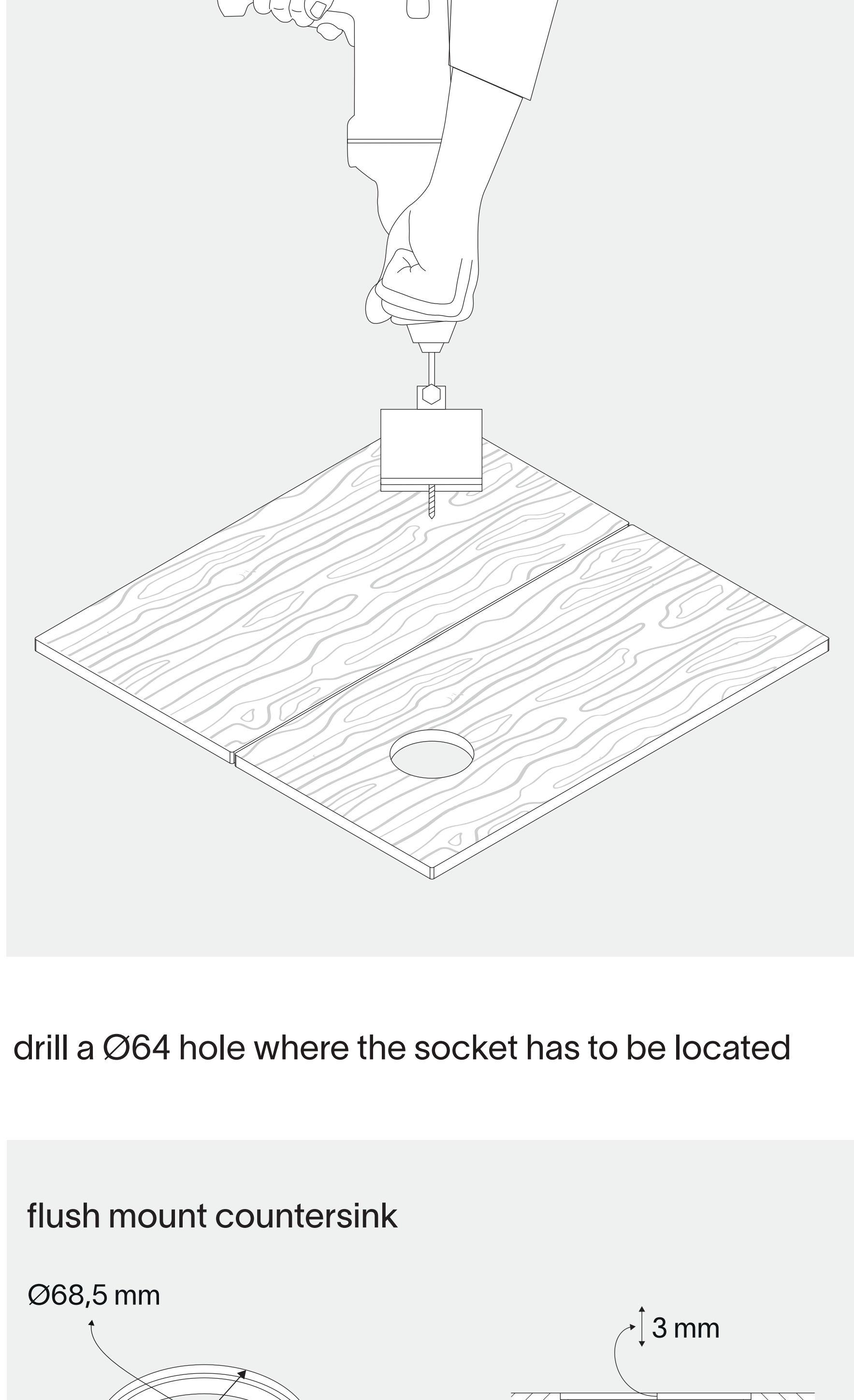
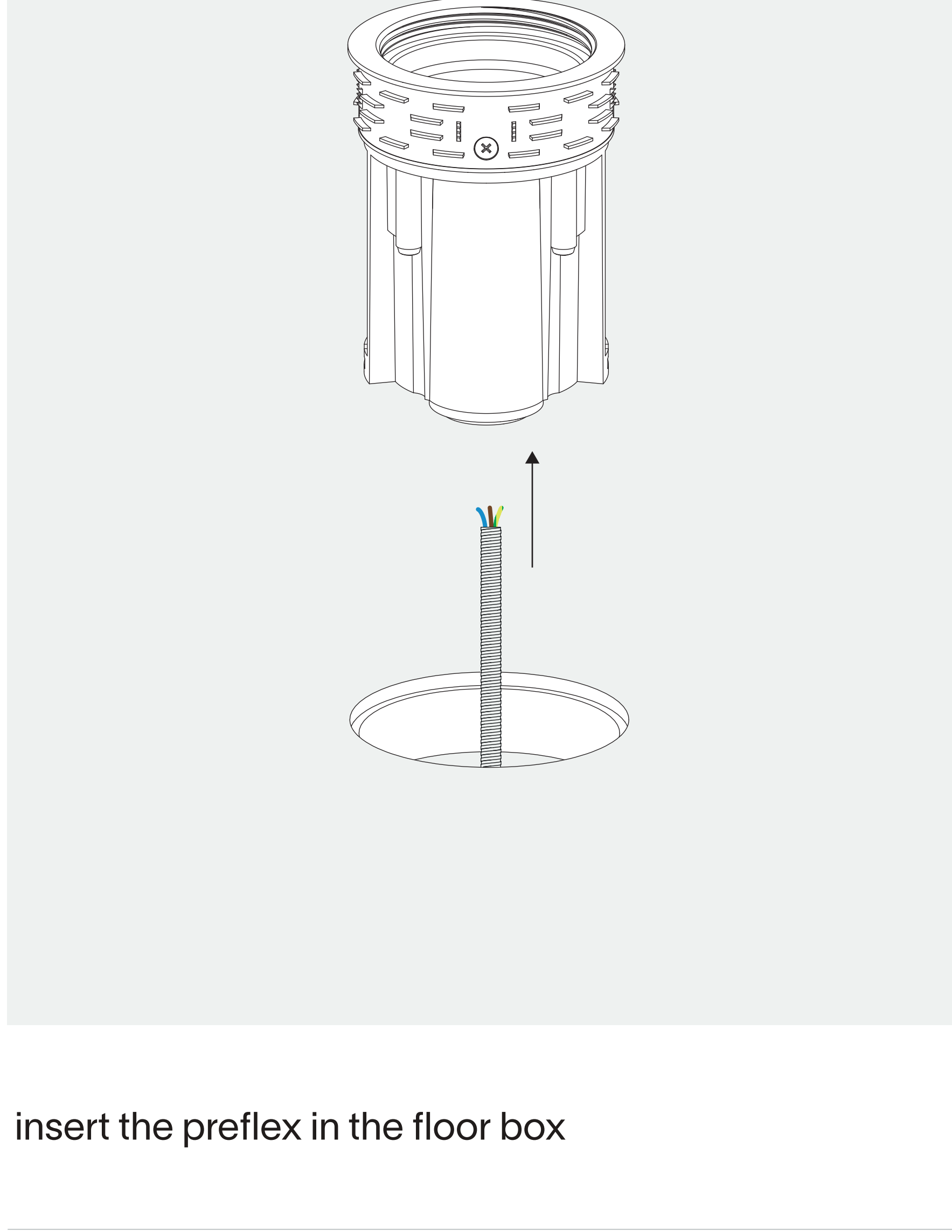
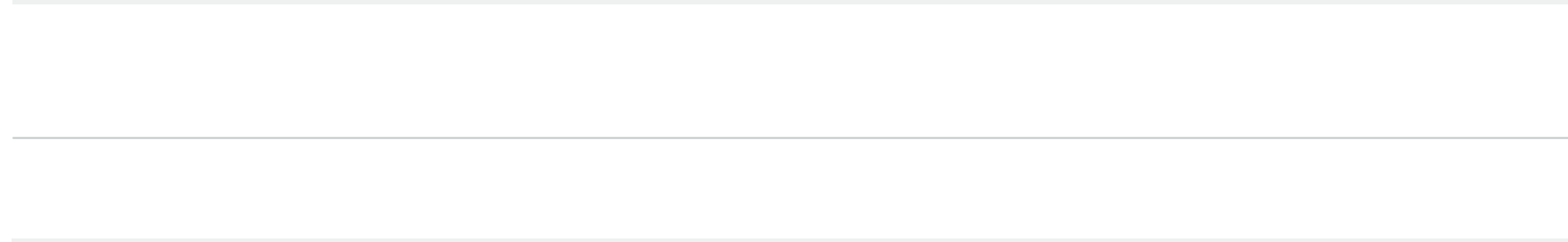


# floor box Ø68

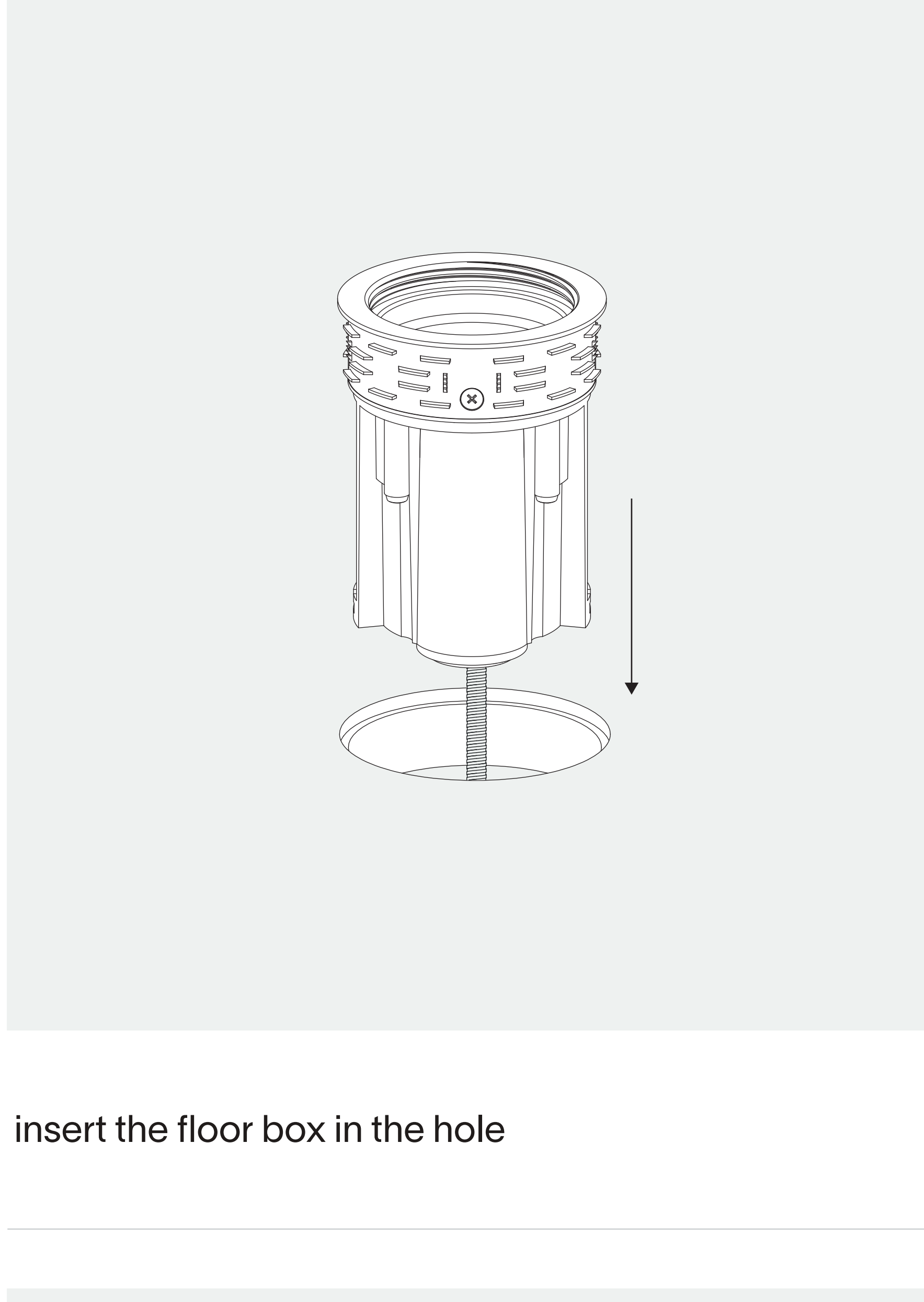
## installation instruction



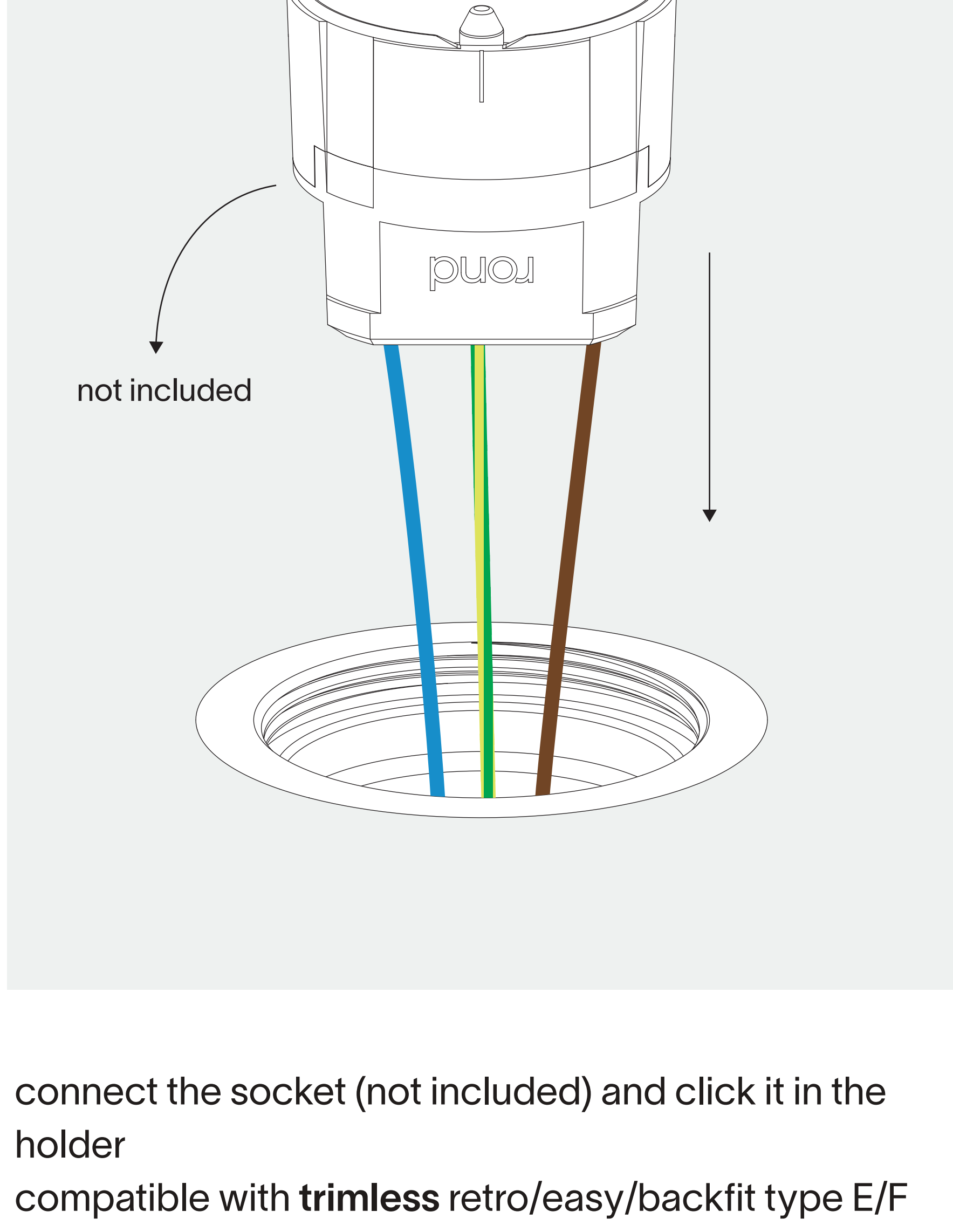
drill a Ø64 hole where the socket has to be located



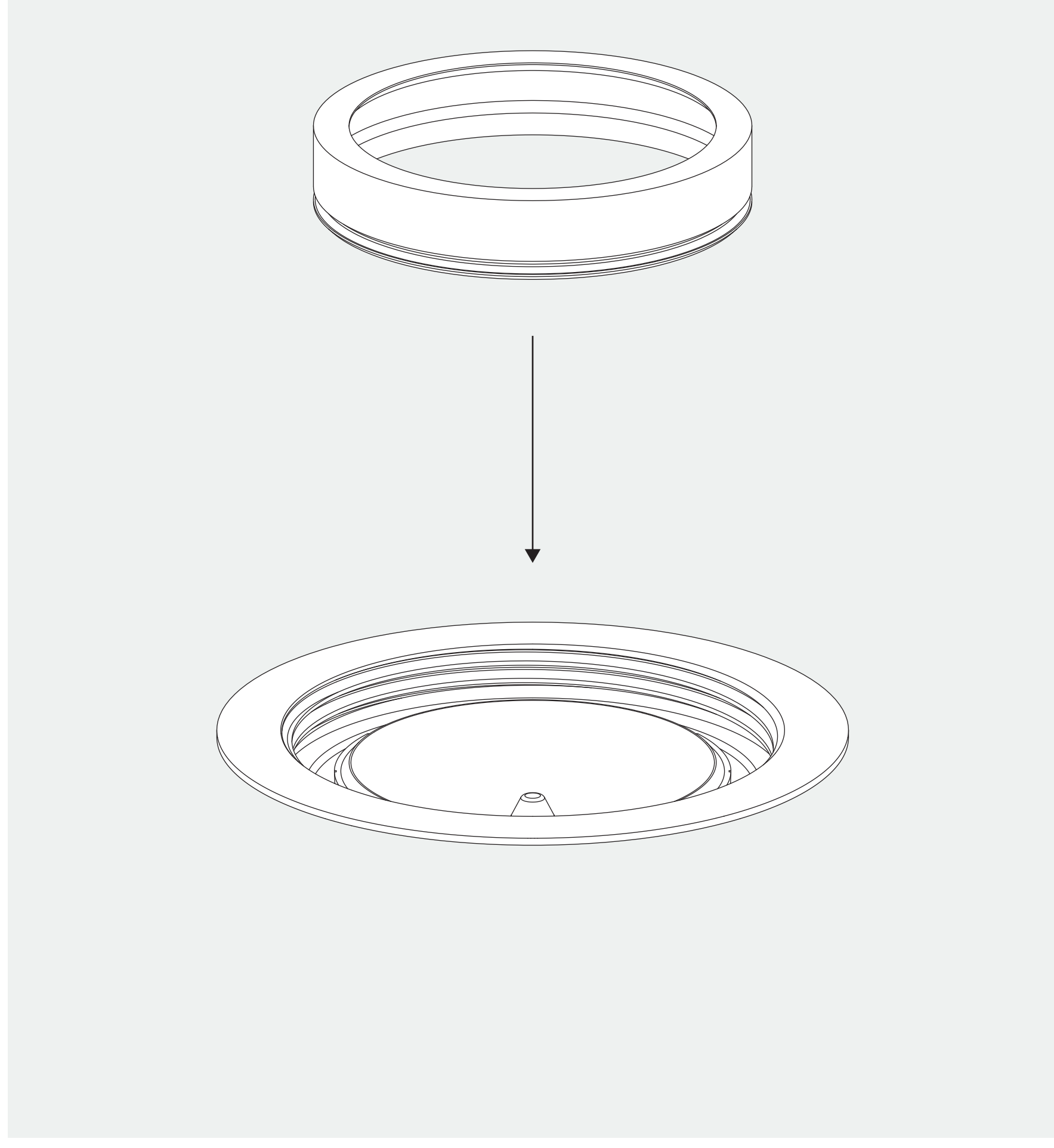
insert the preflex in the floor box



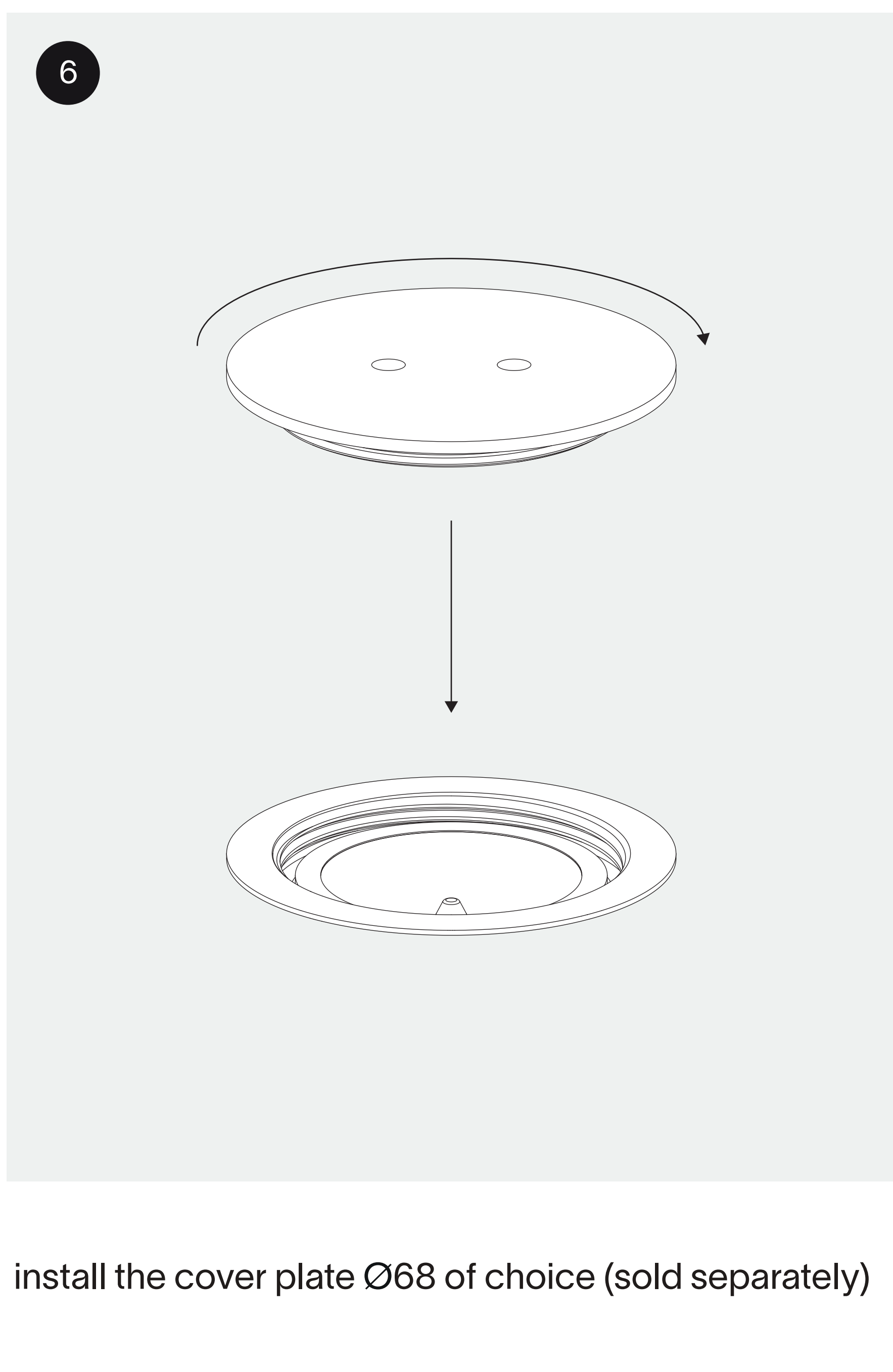
insert the floor box in the hole



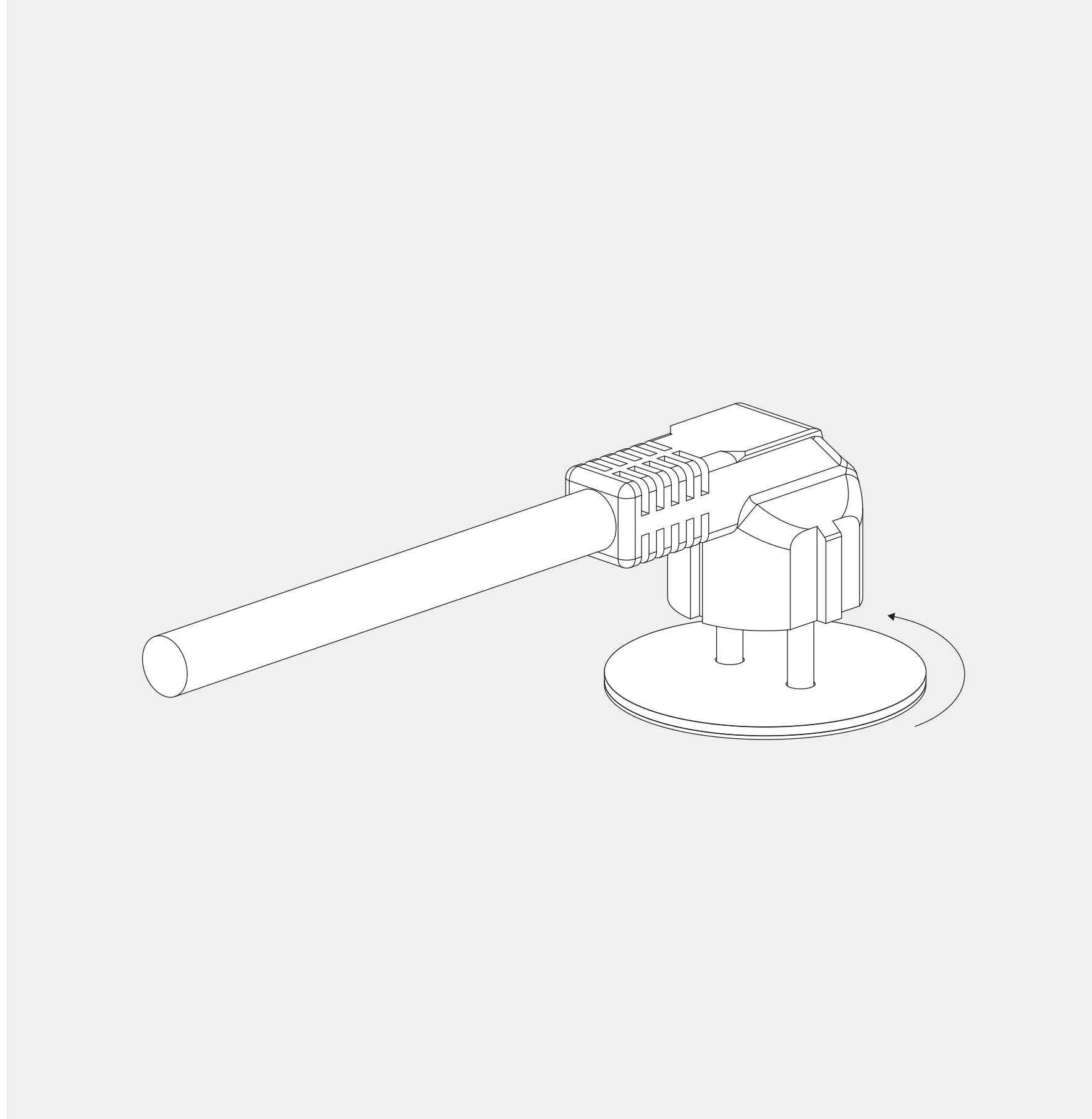
connect the socket (not included) and click it in the holder  
compatible with **trimless** retro/easy/backfit type E/F socket modules



insert the showing



install the cover plate Ø68 of choice (sold separately)



for access remove the cover plate with a plug

thank you for choosing rond