



STADIUM PRO 3 is a high power LED floodlight, with an LES (light emitted surface) high emission, suitable for lighting sports facilities for professional competitive competitions. The spotlight has a graphite grey finish with trivalent treatment for maximum resistance to oxidation and is equipped with an integrated "self-cleaning" thermal dissipation system. It consists of three modules, each with a venting and non-condensing valve, protected from accidental impacts. The rotation system between the bracket and the optical modules is truncated-conical in aluminium with an integrated goniometer within the bracket for easy orientation control and fixing by means of a grub-screw, which ensure the tightness over time of each individual module. The spotlight is available in 4,000K or 5,700K colour temperatures and CRI>70, CRI>80 or CRI>90 (TLCI>80) colour rendering. The range also includes 6 types of circular optics, from 8° to 40°, 1 symmetrical/Elliptical optic and 2 asymmetric optics. The T.I.R.Ex optical system developed by GEWISS, with high transparency PMMA HT lenses, permits total control over the light beam, allowing for wide flexibility in the design environment, with high qualitative and quantitative performance. The power supply box can be fixed on the edge-bracket, or remotely, it is immune to surges of up to 10KV both in RCCB and common mode, with a single cable. The range includes a DALI2 or DMX-RDM power supply, to allow maximum flexibility in the creation of even complex light sets.

Stadium Pro is for a professional use hence the photometric data are not disclosed. We invite you to take contact with our technical and commercial teams.

ALGEMENE INFORMATIE

Context	Professionele sportverlichting
Armatuur	Krachtige LED schijnwerper
Toepassing	Binnen / Buiten
Unieke digitale code (Datamatrix)	Momenteel niet aanwezig

Kleur	Grafietgrijs
Soort lichtbron	LED
Systeem vermogen	1450 W
Levensduur led	L90B10(Tq25 °C)=40.000u; L80B10 (Tq25 °C)=75.000u

Gewicht (kg)	30
--------------	----

Garantie	5 jaar
Opslagtemperatuur	-
Bedrijfstemperatuur	-25 +50 °C

MATERIALEN

Behuizing	Gegoten aluminium
Schildtype	Vlak gehard glas 4 mm
Optiek	T.I.R.Ex. Optisch PMMA HT
Pakking	Anti-aging silicone
Slothaak	-
Externe schroef	Rvs

Kleur	Polyester poedercoating
-------	-------------------------

NORMEN EN GOEDKEURINGEN

Classificatie	-
Apparaat met gereduceerde oppervlaktetemperatuur	-
DIN 18032-3 certificering	Beschikbaar
IPEA	-
Isolatie klasse	I
IP waarde	IP66
Mechanische weerstand	IK08
Gloeidraadtest	-

OPTISCHE EN VERLICHTINGSKENMERKEN

Optiek	Rond 30°
Unified Glare Rating	ULOR = 0%
Lumen output (lm)	170000
Effectiviteit (lm/W)	117

Kleur temperatuur	4000 K
Kleurweergave-index (CRI)	CRI70
Kleurconsistentie (SDCM)	SDCM = 5
Fotobiologisch risicoklasse	-

Standaard	EN60598-1; EN60598-2-5; IEC 62471; IEC 62778
-----------	--

ELEKTRISCHE EN VERLICHTINGSKENMERKEN

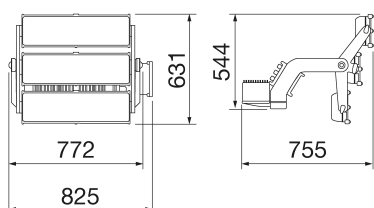
Voeding voltage	Zie externe verzorgingseenheid
Nominale frequentie (Hz)	Zie externe verzorgingseenheid
Driver	Moet afzonderlijk worden besteld
Uitvalpercentage driver	Zie externe verzorgingseenheid
Overspanningsbescherming	Zie externe verzorgingseenheid
Besturingssysteem	Zie externe verzorgingseenheid

INSTALLATIE EN ONDERHOUD

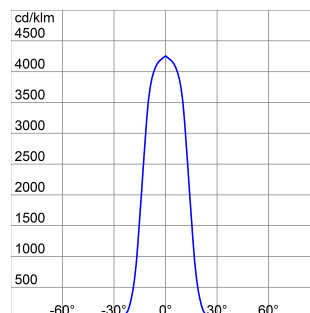
Montage en installatie	Lichtmast - Oppervlakte
Helling	Rotatie op beugel met geïntegreerde goniometer
Bedrading	Multipolaire kabel tussen schijnwerper en voeding

Bevestiging	Beugel
Vervangbaarheid lichtbron	Door professional
Vervangbaarheid verdeelinrichting	Door professional
Driver box	Extern
Maximaal oppervlak blootgesteld aan de wind	0,36 m²

DIMENSIONAL



PHOTOMETRIC DISTRIBUTION





Product Data Sheet

GWP3331AG740

STADIUM PRO

TECHNICAL SYMBOLOGY




0,36 m²



IP
IP66

IK
IK08

GWT
-

STANDARDS/APPROVALS



UK
CA **CE**