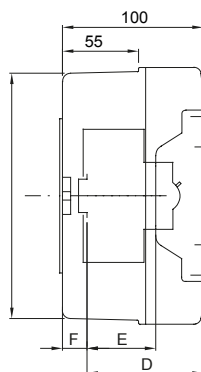
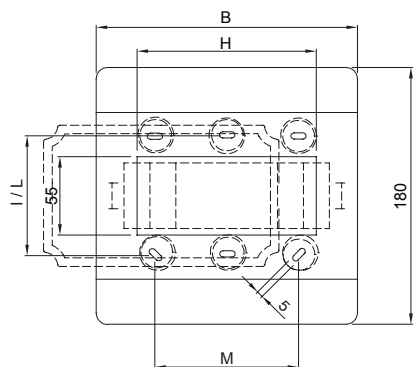




| | | | |
|------------------------|--|---------------------------|---------------------------------|
| Nominale stroom (A) | 125 | Isolatie klasse | II |
| Kleur | Rood RAL 3000 | Buitenste afm. LxHxD (mm) | 180 x 180 x 100 |
| IP waarde | IP55 | Installatie | Wandmontage |
| Materiaal | Technopolymeer | Mechanische weerstand | IK08 |
| Nominale spanning (V) | 400 | Gloeidraadtest | 650 °C |
| Bedrijfstemperatuur | -25 +60 °C | Type materiaal | Halogeenvrij conform EN 60754-2 |
| Electrocod | 0321 | Thermodruk met kogel | 70 °C |
| Standaard | EN 60670-1 (CEI 23-48) IEC60670-24 CEI 23-49 | Isolatie spanning | 750 V |
| Aant. modules EN 50022 | 8 | | |

DIMENSIONAL



| | GW 42 204 GW 42 206 GW 42 207 | GW 42 202 GW 42 208 | GW 42 203 |
|----|-------------------------------------|------------------------|-----------|
| B | 108 | 180 | 180 |
| A' | 172 | 172 | 172 |
| B' | 100 | 172 | 172 |
| D | 75 | 75 | - |
| E | 48 | 48 | - |
| F | 12,8 | 12,8 | - |
| H | 55 | 125 | 125 |
| I | 84 | - | - |
| L | - | 138 | 138 |
| M | - | 100 | 100 |

TECHNICAL SYMBOLOGY



II

IP

IP55

IK

IK08

GWT

650 °C



Halogeenvrij conform
EN 60754-2



70 °C

STANDARDS/APPROVALS

