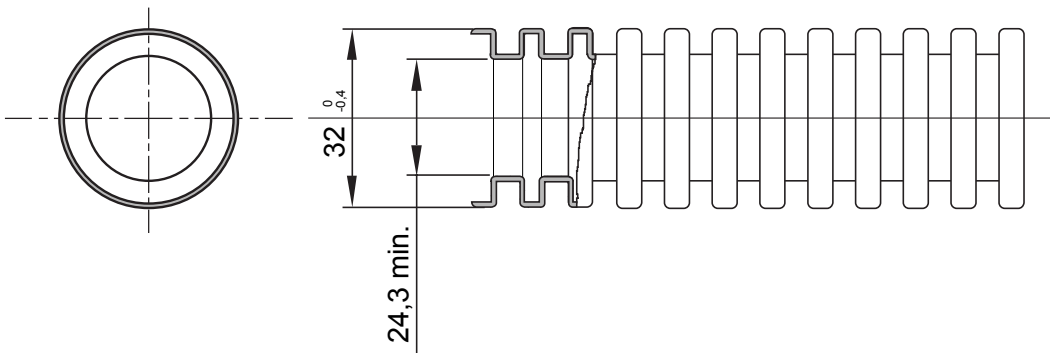




Pliable protective conduit system FK15range, made of PVC: classification 3321, available in seven diameters, from 16 to 63 mm, with or without cable puller and in six different colours to allow the identification of the various electrical lines. Suitable for electrical system and/or data transmission. Suitable for flush mounting installation in floors, walls and/or ceiling and also inside false ceilings and floating floors.

Colour	Light blue	Material	PVC
Type	with cable puller	Conduits Ø (mm)	32
Glow Wire Test	960 °C	Electrocod	2112
Resistance to compression	3 (Medium - 750 N)	Resistance to impact	3 (Medium - 2 J)
Resistance to bending	2 (Pliable)	Electrical characteristics	2 (With electrical insulating characteristics)
Protection against ingress of solid objects without accessories	0	Protection against ingress of water	0
Resistance against corrosion	Not applicable to plastic conduit systems	Fire resistance	1 (Non-flame propagating)
Insulation resistance	100 MΩ a 500V for 1 minute	Protection against ingress of solid objects with GF coupling	4
Dielectric rigidity	2000 V a 50 Hz for 15 minutes	Standard	EN 61386-1 EN 61386-22
Classification	3321		

DIMENSIONAL



TECHNICAL SYMBOLOGY



STANDARDS/APPROVALS

