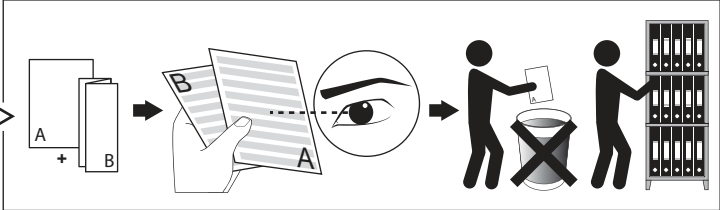



LOGIC 60 R


DEEL
PARTIE
TEIL
PART
PARTE
PARTE

A



E

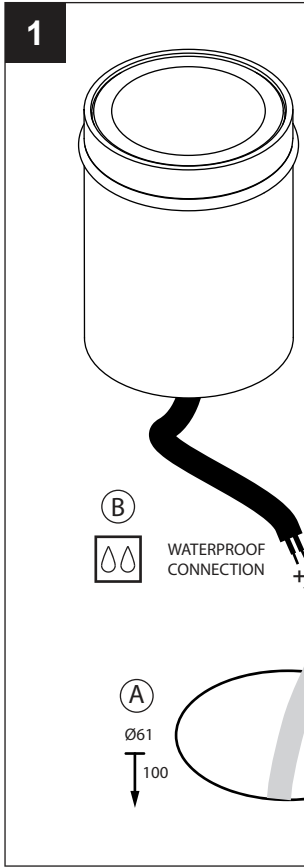




IP67

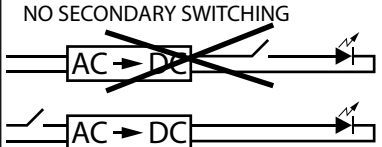
Stofdicht - Beschermtd tegen effecten van tijdelijke indompeling
Etanche aux poussières - Protège contre les effets de l'immersion temporaire
Staubdicht - Geschützt gegen vorübergehend Eintaucheffekte
Dust-tight - Protected against the effects of temporary immersion
Hermético al polvo - Protegido contra los efectos de la inmersión temporal
A tenuta di polvere - Protetto contro gli effetti dell'immersione temporaneo

1



ATTENTION
OBSERVE PRECAUTIONS FOR
HANDLING ELECTROSTATIC
DISCHARGE SENSITIVE
DEVICES

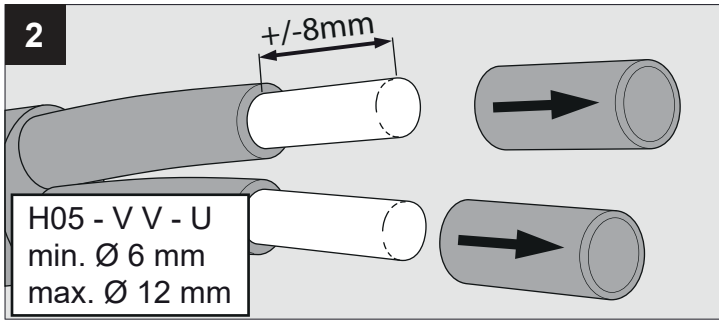
NO SECONDARY SWITCHING



I _o	
P _o	SADB 06/10/2022
U _f Typical	

OPTIONS
TACTIC BOX 60 R
213 19 10
CBOX
216 12 00

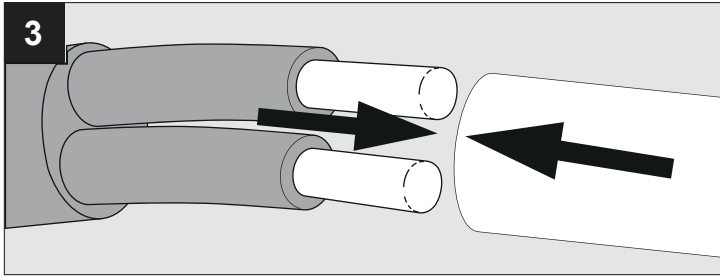
2



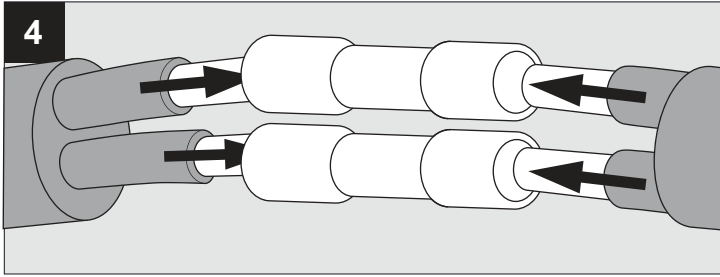
H05 - V V - U
min. Ø 6 mm
max. Ø 12 mm

+/-8mm

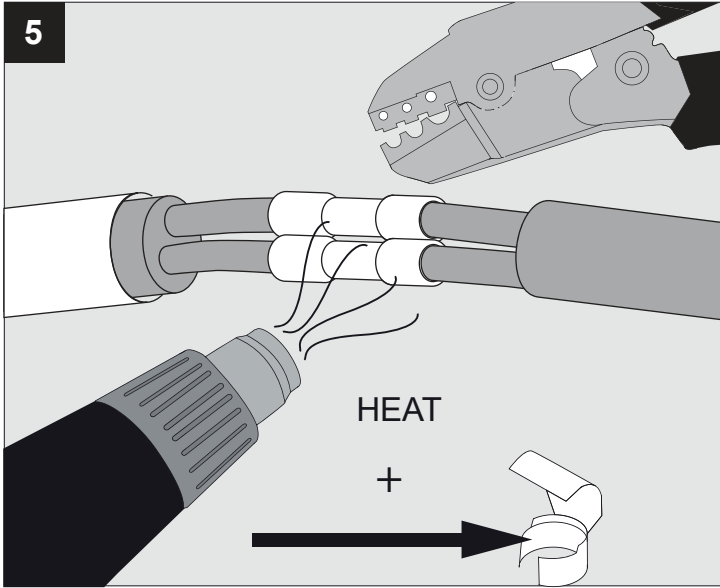
3



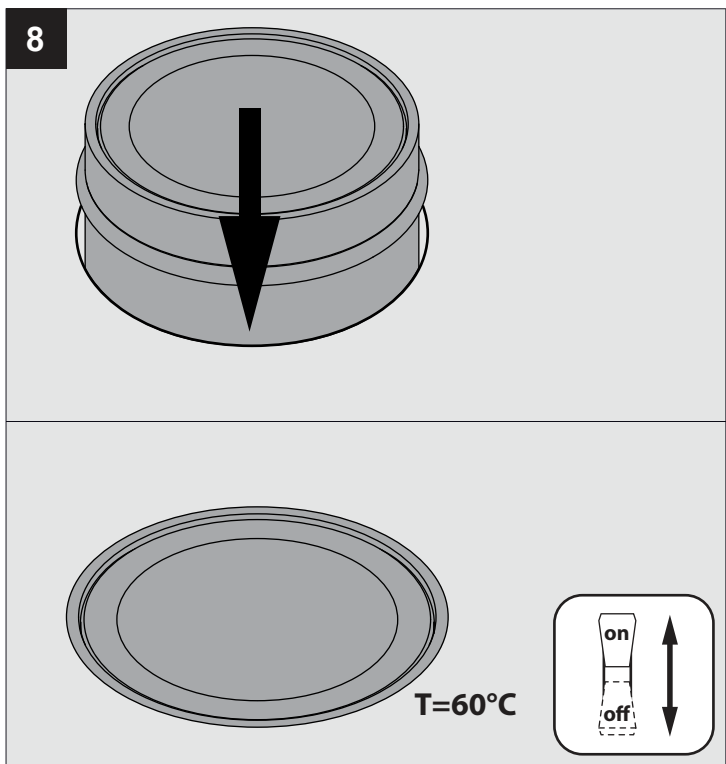
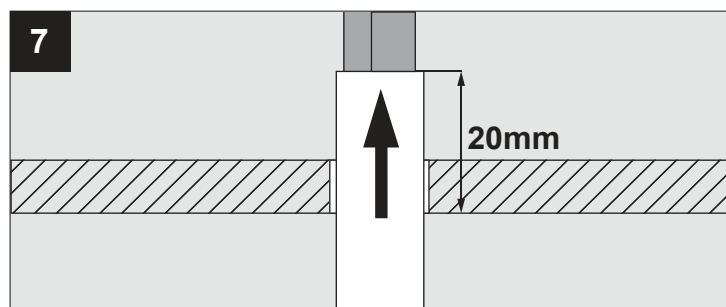
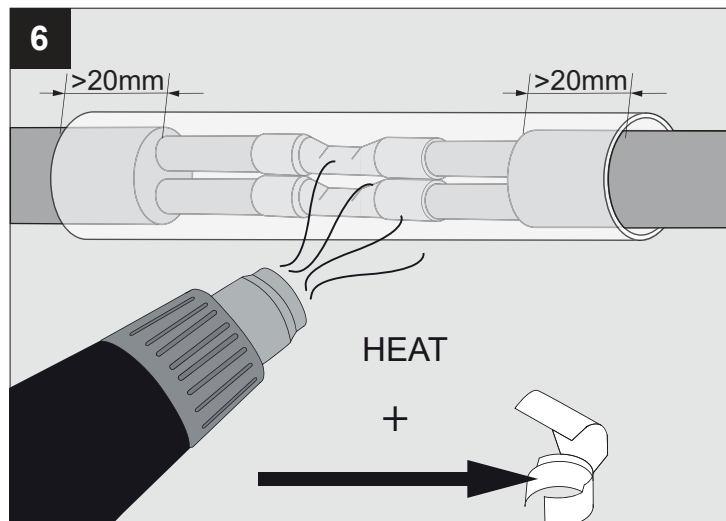
4



5



HEAT
+



Replaceable (LED only) light source by a professional

可由专业人士更换 (仅限于LED) 光源

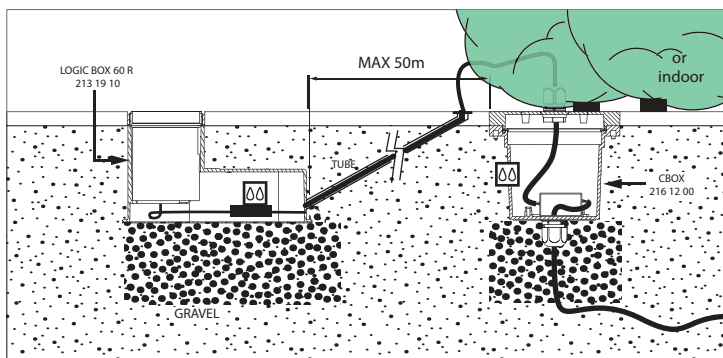
Сменный (только светодиодный) источник света только квалифицированным персоналом



Verlichtingsbron (enkel LED) kan enkel vervangen worden door een professional
La source d'éclairage (uniquement LED) ne peut être remplacée que par un professionnel
Die Lichtquelle (nur LED) kann nur von einem Fachmann ausgetauscht werden
La fuente de iluminación (solo LED) y equipo de control solo puede ser reemplazada por un profesional
La fonte di illuminazione (solo LED) può essere sostituita solo da un professionista



DE GARANTIE VERVALT INDIEN HET TOESTEL NIET GEÏNSTALLEERD IS IN DE BIJHORENDE LOGIC BOX
UNE INSTALLATION SANS GENIE BOX ENTRAÎNE LA PERTE AUTOMATIQUE DE LA GARANTIE
DIE GARANTIE ERLISCHT, WENN DIE LEUCHTE NICHT IN DER ENTSPRECHENDEN LOGIC BOX INSTALLIERT WIRD
THE GUARANTEE IS VOID IF THE FIXTURE IS NOT INSTALLED IN THE LOGIC BOX
LA GARANTIA ES NULA SI LA LUMINARIA NO SE INSTALA CON EL LOGIC BOX
LA GARANZIA NON È VALIDA SE L'APPARECCHIO NON VIENE MONTATO NELL'APPOSITA LOGIC BOX



WARNING

ANY CLAIM TO A WARRANTY SHALL BECOME NULL AND VOID IF THE DEVICE IS NOT INSTALLED WITH THE SUITABLE BOX (OPTIONAL) PROVIDED BY DELTALIGHT N.V.

- Use only power supplies that are certified according to the applicable IEC or UL safety standards.
- Use only SELV power supplies.
- Check the ratings of the power supply with those of the luminaire.
The maximum current rating must be taken into account.
The indicated typical voltage must not be used to select a constant voltage power supply but is intended to be used to select a constant current power supply that is able to cover that typical voltage.
- Take appropriate ESD measures. Avoid touching bare conductors.
- Leds or led luminaires that require a current controlled power supply must never be connected in parallel.
- Leds can be damaged by the contact with certain chemicals or chemical gasses.
Therefore led domes or led engines should never be cleaned with chemical substances.
- The following substances have proven to have a negative influence on the performance and must not be used in the direct environment of a led luminaire.
Methyl acetate or ethyl acetate (i.e., nail polish remover)
Cyanoacrylates (i.e., "Superglue")
Glycol ethers (including Radio Shack® Precision Electronics Cleaner - dipropylene glycol monomethyl ether)
Formaldehyde or butadiene (including Ashland PLIOBOND® adhesive)
Dymax 984-LVUF conformal coating
Loctite Sumo Glue
Gorilla Glue
Bleach, Bleach-containing cleaners, sprays
Loctite 384 adhesive
Loctite 7387 activator
Loctite 242 threadlocker
- Remove insulation and/or provide sufficient ventilation so that the indicated max Tc is not surpassed.
- Leds are susceptible to switching transients. Therefore switching must be done in the primary circuit of the power supply.
- DELTA LIGHT recommends to use the power supplies that are indicated in the Lighting Bible.
- Respect polarity
- Don't test LED luminaires one by one on a powersupply that is switched on.

This product contains a light source of energy efficiency class E

本产品包含能效等级为 E 的光源

Этот артикул содержит источник света с энергоэффективностью класса E

يحتوي هذا المنتج على مصدر ضوء ذو كفاءة الطاقة E



Dit product bevat een verlichtingsbron van energie-efficiëntieklasse E
Ce produit contient une source d'éclairage de classe d'efficacité énergétique E
Dieses Produkt enthält eine Lichtquelle der Energieeffizienzklasse E
Este producto contiene una fuente de iluminación de clase de eficiencia energética E
Questo prodotto contiene una fonte di illuminazione in classe di efficienza energetica E

De verlichtingsbron van dit verlichtingstoestel zal enkel door de fabrikant of door de fabrikant aangestelde installateur vervangen worden.

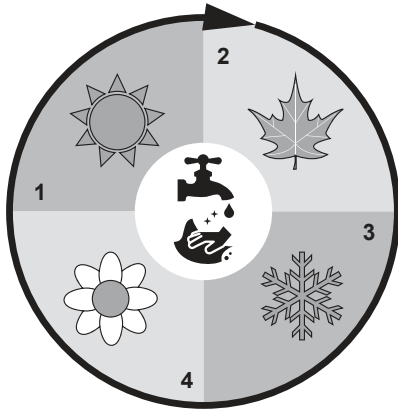
La source lumière de cet appareil ne sera remplacée que par l'entrepreneur ou par un agent reconnu.

Das enthaltene Leuchtmittel sollte nur durch entsprechendes Fachpersonal ersetzt werden.

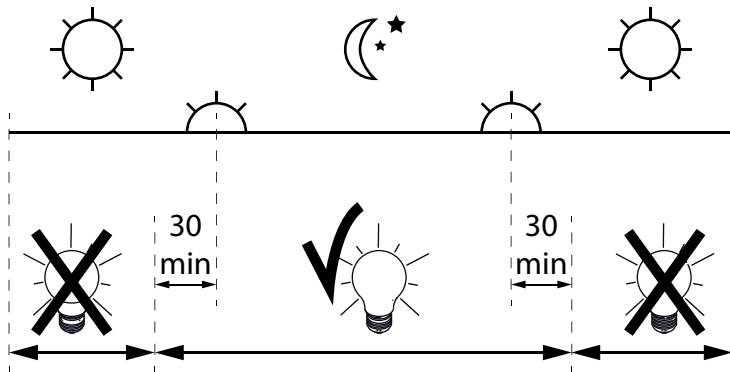
The light source contained in this luminaire shall only be replaced by the manufacturer or his service agent.

La fuente de iluminación que tiene esta luminaria sólo puede remplazarse por el fabricante o por un instalador autorizado.

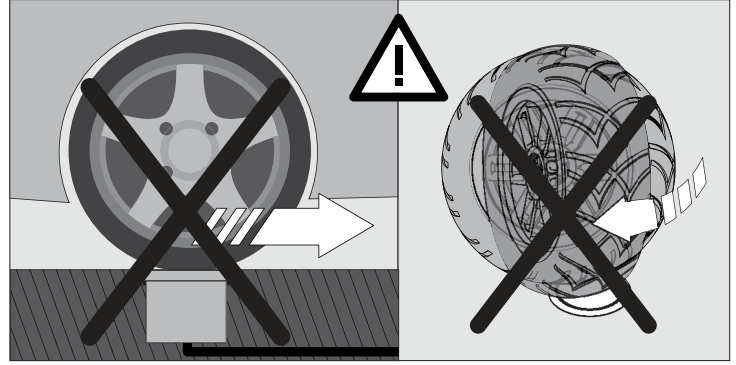
La sorgente luminosa incorporata in questo apparecchio può essere sostituita solo dal produttore, da un suo centro assistenza oppure da una persona in possesso della necessaria abilitazione.



CAUTION! CLEAN AT LEAST QUARTERLY WITH WATER AND NON-ABRASIVE CLOTH



Dagelijkse ontstekingsperiode toegestaan
Durée quotidienne d'allumage admissible
Erlaubte tägliche einschaltdauer
Allowed daily operation period
Period giornaliero di accensione ammesso
Periodo diario de encendido permitido



Pressure load: 200kg (~2kN)
Rated maximum surface temperature: 50°C
负载压: 200kg (~2kN)
(额定) 表面最高温度: 50°C
Допустимая статическая нагрузка до 2kN (до 200кг)
Номинальная максимальная температура поверхности: 50°C

حمل ضغط : ٢٠٠ كيلو (٢ كيلو نيوتن تقريبا)
درجة الحرارة القصوى المصنفة للسطح : ٥٠ درجة مئوية

Drukbelasting: 200kg (~2kN)
Maximale nominale oppervlaktetemperatuur: 50°C
Pression: 200kg (~2kN)
Nominale température de surface maximale: 50°C
Druckbelastung: 200kg (~2kN)
Bewertete maximale Oberflächentemperatur: 50°C
Carico di pressione: 200kg (~2kN)
Temperatura massima nominale della superficie: 50°C
Presión de carga: 200kg (~2kN)
Temperatura máxima de la superficie: 50°C