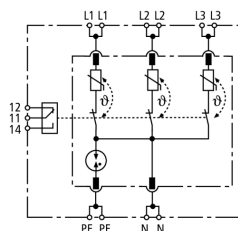


## DR M 4P 255 FM (953 405)

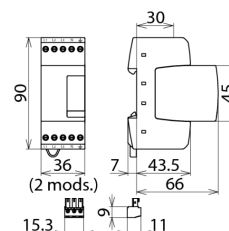
- Four-pole surge arrester consisting of a base element and a plug-in protection module
- High discharge capacity due to heavy-duty zinc oxide varistor / spark gap combination
- Energy coordination with other arresters of the Red/Line product family



Figure without obligation



Basic circuit diagram DR M 4P 255 FM



Dimension drawing DR M 4P 255 FM

Four-pole surge arrester consisting of a base part and a plug-in protection module; FM version with floating remote signalling contact.

Type	DR M 4P 255 FM
Part No.	953 405
SPD according to EN 61643-11 / IEC 61643-11	type 3 / class III
Nominal voltage (a.c.) ( $U_N$ )	230 / 400 V (50 / 60 Hz)
Max. continuous operating voltage (a.c.) ( $U_C$ )	255 / 440 V (50 / 60 Hz)
Nominal load current (a.c.) ( $I_L$ )	25 A
Nominal discharge current (8/20 $\mu$ s) ( $I_n$ )	3 kA
Total discharge current (8/20 $\mu$ s) [ $L1+L2+L3+N-PE$ ] ( $I_{total}$ )	8 kA
Combination wave ( $U_{OC}$ )	6 kV
Combination wave [ $L1+L2+L3+N-PE$ ] ( $U_{OC total}$ )	16 kV
Voltage protection level [ $L-N$ ] / [ $L/N-PE$ ] ( $U_P$ )	$\leq 1000 \leq 1500$ V
Response time [ $L-N$ ] ( $t_A$ )	$\leq 25$ ns
Response time [ $L/N-PE$ ] ( $t_A$ )	$\leq 100$ ns
Max. mains-side overcurrent protection	25 A gG or B 25 A
Short-circuit withstand capability for mains-side overcurrent protection with 25 A gL/gG ( $I_{sccr}$ )	6 kA <sub>rms</sub>
Temporary overvoltage (TOV) [ $L-N$ ] ( $U_T$ ) – Characteristic	335 V / 5 sec. – withstand
Temporary overvoltage (TOV) [ $L-N$ ] ( $U_T$ ) – Characteristic	440 V / 120 min. – safe failure
Temporary overvoltage (TOV) [ $L/N-PE$ ] ( $U_T$ ) – Characteristic	335 V / 120 min. – withstand
Temporary overvoltage (TOV) [ $L/N-PE$ ] ( $U_T$ ) – Characteristic	440 V / 5 sec. – withstand
Temporary overvoltage (TOV) [ $N-PE$ ] ( $U_T$ ) – Characteristic	1200 V / 200 ms – safe failure
Operating temperature range ( $T_U$ )	-40 °C ... +80 °C
Operating state / fault indication	green / red
Number of ports	1
Cross-sectional area (min.)	0.5 mm <sup>2</sup> solid / flexible
Cross-sectional area (max.)	4 mm <sup>2</sup> solid / 2.5 mm <sup>2</sup> flexible
For mounting on	35 mm DIN rails acc. to EN 60715
Enclosure material	thermoplastic, red, UL 94 V-0
Place of installation	indoor installation
Degree of protection	IP 20
Capacity	2 modules, DIN 43880
Approvals	KEMA, VDE
Type of remote signalling contact	changeover contact
Switching capacity (a.c.)	250 V / 0.5 A
Switching capacity (d.c.)	250 V / 0.1 A; 125 V / 0.2 A; 75 V / 0.5 A
Cross-sectional area for remote signalling terminals	max. 1.5 mm <sup>2</sup> solid / flexible
Weight	151 g
Customs tariff number	85363030
GTIN	4013364115774
PU	1 pc(s)

We reserve the right to introduce changes in performance, configuration and technology, dimensions, weights and materials in the course of technical progress. The figures are shown without obligation.