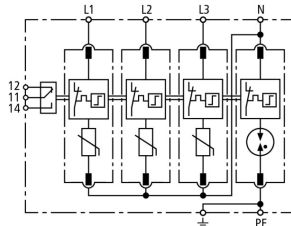


DG M TT 150 FM (952 328)

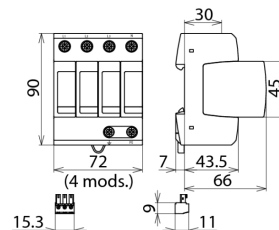
- Prewired complete unit consisting of a base part and plug-in protection modules
- High discharge capacity due to heavy-duty zinc oxide varistors / spark gaps
- High reliability due to "Thermo Dynamic Control" SPD monitoring device



Figure without obligation



Basic circuit diagram DG M TT 150 FM



Dimension drawing DG M TT 150 FM

Modular surge arrester for use in TT and TN-S systems ("3+1" circuit); with floating remote signalling contact.

Type	DG M TT 150 FM
Part No.	952 328
SPD according to EN 61643-11 / IEC 61643-11	type 2 / class II
Nominal voltage (a.c.) (U_n)	120 / 240V (50 / 60 Hz)
Max. continuous operating voltage (a.c.) [L-N] (U_c)	150V (50 / 60 Hz)
Max. continuous operating voltage (a.c.) [N-PE] (U_c)	255V (50 / 60 Hz)
Nominal discharge current (8/20 μ s) (I_n)	15 kA
Max. discharge current (8/20 μ s) (I_{max})	40 kA
Lightning impulse current (10/350 μ s) [N-PE] (I_{imp})	12 kA
Voltage protection level [L-N]/[N-PE] (U_p)	$\leq 0.7 / \leq 1.5$ kV
Voltage protection level [L-N] / [N-PE] at 5 kA (U_p)	$\leq 0.55 / \leq 1.5$ kV
Follow current extinguishing capability [N-PE] (I_f)	100 A _{rms}
Response time [L-N] (t_A)	≤ 25 ns
Response time [N-PE] (t_A)	≤ 100 ns
Max. mains-side overcurrent protection	125 A gG
Short-circuit withstand capability for max. mains-side overcurrent protection (I_{SCCR})	50 kA _{rms}
Temporary overvoltage (TOV) [L-N] (U_T) – Characteristic	175 V / 5 sec. – withstand
Temporary overvoltage (TOV) [L-N] (U_T) – Characteristic	230 V / 120 min. – safe failure
Temporary overvoltage (TOV) [N-PE] (U_T) – Characteristic	1200 V / 200 ms – withstand
Operating temperature range (T_U)	-40 °C ... +80 °C
Operating state / fault indication	green / red
Number of ports	1
Cross-sectional area (min.)	1.5 mm ² solid / flexible
Cross-sectional area (max.)	35 mm ² stranded / 25 mm ² flexible
For mounting on	35 mm DIN rails acc. to EN 60715
Enclosure material	thermoplastic, red, UL 94 V-0
Place of installation	indoor installation
Degree of protection	IP 20
Capacity	4 module(s), DIN 43880
Type of remote signalling contact	changeover contact
Switching capacity (a.c.)	250 V / 0.5 A
Switching capacity (d.c.)	250 V / 0.1 A; 125 V / 0.2 A; 75 V / 0.5 A
Cross-sectional area for remote signalling terminals	max. 1.5 mm ² solid / flexible
Weight	390 g
Customs tariff number	85363030
GTIN	4013364133242
PU	1 pc(s)

We reserve the right to introduce changes in performance, configuration and technology, dimensions, weights and materials in the course of technical progress. The figures are shown without obligation.