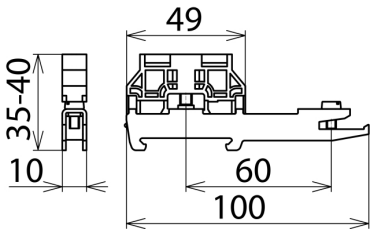
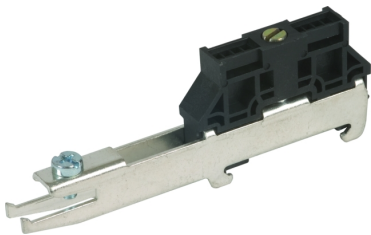




SH1 18X3 ST (919 012)

- Extremely space-saving
- With one-sided contact
- For 35 mm DIN rails acc. to EN 60715



Dimension drawing SH1 18X3 ST

Rail support suitable for DIN rail mounting. Low-impedance connection of the shield terminals to the DIN rail via the busbar.

Type	SH1 18X3 ST
Part No.	919 012
Version	one-sided contact
Material	tin-plated steel
For mounting on	35 mm DIN rails acc. to EN 60715
Weight	40 g
Customs tariff number	85389099
GTIN	4013364071599
PU	1 pc(s)

We reserve the right to introduce changes in performance, configuration and technology, dimensions, weights and materials in the course of technical progress. The figures are shown without obligation.